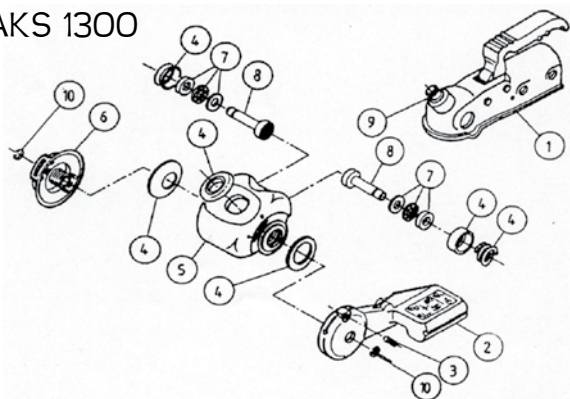
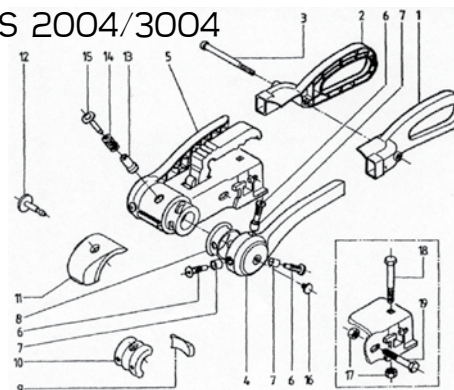


## AKS Stabilisers

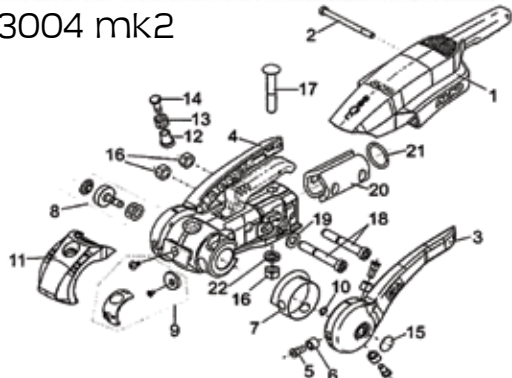
## AKS 1300



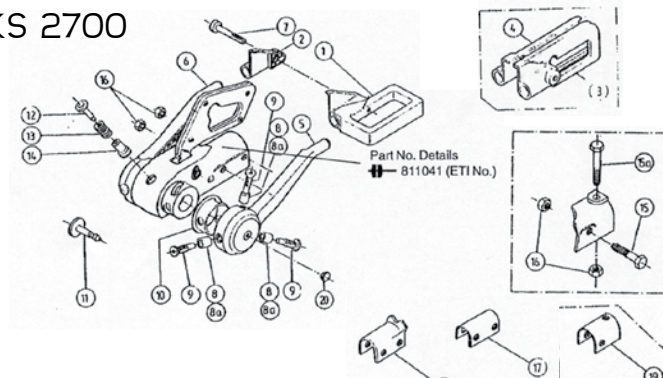
## AKS 2004/3004


**AL-KO**  
 QUALITY FOR LIFE

## AKS 3004 mk2



## AKS 2700



Spare part	AKS 1300	AKS 2004	AKS 3004		AKS 3004 mk2	AKS 2000 /2500 /2700
Handle left	2. 603379 <b>007700</b> Operating lever	1. 690243 <b>007730</b>	1. 690243 <b>007730</b>	Complete 1552795 <b>007937</b>	1. 693589	1. 372161 <b>007708</b> Type A 3. 581158 <b>007710</b> Type B
Handle right	6. 614358 <b>007704</b> Ratchet hand wheel	2. 690244 <b>007731</b>	2. 690244 <b>007731</b>			2. 372162 <b>007709</b> Type A 4. 581159 <b>007711</b> Type B
Arm left		4. 690241 <b>007733</b>	4. 690241 <b>007733</b>		3. 690241 <b>007733</b>	5. 5737912 <b>007712</b>
Arm right		5. 690242 <b>007734</b>	5. 690242 <b>007734</b>		4. 690242 <b>007734</b>	6. 573913 <b>007713</b>
Bearing	7. 246338 <b>007705</b>	7. 380307 <b>007736</b>	7. 380307 <b>007736</b>		6. 380307 <b>007736</b>	8. 380307 <b>007736</b>
Bearing bolt		6. 372284 <b>007717</b>	6. 372284 <b>007717</b>		5. 372284 <b>007717</b>	6. 372284 <b>007717</b>
seal	Kit(5 seals & 1 spring) 4. 246340 <b>007702</b>	8. 372166 <b>007737</b>	8. 372166 <b>007737</b>		7. 372166 <b>007737</b>	10. 372166 <b>007737</b>
Front & rear friction pad kit		9/10. 1212126 <b>007935</b>	9/10. 691418 <b>007936</b>		9. 691418 <b>007936</b>	
Side friction pad kit	8. 638057 <b>007957</b>	To 1993 12. 585208 <b>008004</b> From 1994 12. 287763 <b>008005</b>	To 1993 12. 585208 <b>008004</b> From 1994 12. 287763 <b>008005</b>		8. 287763 <b>008005</b>	11. 287763 <b>008005</b>
Inner indicator button	Kit 9. 246341	13. 372288 <b>007722</b>	13 to 15. Kit 286799 <b>007719</b>		14. 372288 <b>007722</b>	12. 372287 <b>007720</b>
Spring		14. 372285 <b>007721</b>			13. 372285 <b>007721</b>	13. 372285 <b>007721</b>
Outer indicator button		15. 372287 <b>007720</b>			12. 372287 <b>007720</b>	14. 372288 <b>007722</b>
Cap		16. 583885	16. 583885		15. 1367606	20. 583885
Fixing kit	622175 <b>007703</b>	1336334 <b>007743</b>	1336334 <b>007743</b>		1336334 <b>007743</b>	648936 <b>007725</b>
Other	Retaining screw 3. 603153 <b>007701</b>  Split rings 10 246337 <b>007707</b>	Hex nut M12-10 17. 371932 <b>007738</b>	Hex nut M12-10 17. 371932 <b>007738</b>		Hex nut M12-10 16. 371932 <b>007738</b>	Hex bolt M12 X 80 15. 703556  Hex bolt M12 X 75 15A. 703556
		Top bolt M12 x 75 18. 603392 <b>007739</b>	Top bolt M12 x 75 18. 603392 <b>007739</b>		Top bolt M12 x 75 17. 603392 <b>007739</b>	Nut M12 16. 701933
		Side bolt M12 x 75 19. 704439 <b>007740</b>	Side bolt M12 x 75 19. 692034 <b>007741</b>		Side bolt M12 x 75 18. 692034 <b>007741</b>	Packing pieces 17. 372936 <b>007726</b> Type A 40mm 18. 372937 <b>007727</b> Type A 35mm 19. 372462 <b>007728</b> Type B 40mm

## AKS Spares



Ratchet  
hand wheel  
**007704**



Operating lever  
**007700**



Handle complete **007937**  
Left handle only **007730**  
Right handle only **007731**



Handle LH  
type A  
**007708**



Handle RH  
type A  
**007709**



Handle LH  
type B **007710**  
Handle RH  
type B **007711**



Left arm **007733**  
Right arm **007734**



Arm LH **007712**  
Arm RH **007713**



Bearing bolt  
**007717**



Bearing  
**007736**



Seal  
**007737**



Retaining  
screw  
**007701**



Seal kit  
**007702**



Indicator button kit  
**007719**



Hexagon nut  
M12-10 A3C  
**007738**



Bolt M12 x 75  
**007739**



Bolt M12 x 75  
2004 only  
**007740**



Bolt M12 x 75 - 10.9  
3004 only **007741**



Bearing  
set  
**007705**



Split rings  
set  
**007707**



Indicator button AKS2000 & 2004 series  
Outer **007720**



Spring  
**007721**



Indicator button AKS2000 & 2004 series  
Inner **007722**



Gaiter  
**007735**



Fixing kit  
**007703**



Fixing kit 3004  
**007743**



Fixing kit  
2700  
**007725**



Packing piece  
40mm type A  
**007726**



### Side friction pads

To 1993 for 2000/2500 stabilisers  
**008004**

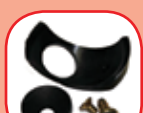
From 1994 2004/3004 stabilisers  
**008005**



### Front/rear friction pads

2004 stabilisers  
**007935**

3004 stabilisers  
**007936**



Friction pad kit  
1300  
**007957**



Packing piece  
35mm type A  
**007727**



Packing piece  
45mm type B  
**007728**

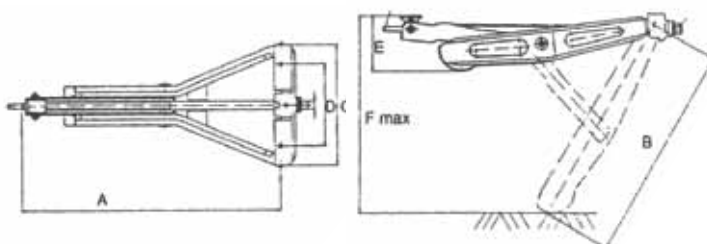
## Corner steadies

### DESCRIPTION

DESCRIPTION	GROVE PT NO	AL-KO PT NO
CORNER STEADY SYSTEM	<b>007432</b>	205808
CORNER STEADY SCREW 585 X 20MM		355200
CORNER STEADY NUT 20MM	<b>007429</b>	355198
COLLAR		355203
ROLL PIN 5MM		701631
CORNER STEADY SCREW 680 X 20MM FITS 517779	<b>007431</b>	355815
CORNER STEADY NUT 16MM	<b>007428</b>	371580
ROLL PIN 4MM		700189
ROLL PIN 5MM		700631
CORNER STEADY SYSTEM	<b>007433</b>	205817
CORNER STEADY NUT 20MM	<b>007429</b>	355198
COLLAR		355203
ROLL PIN 5MM		701631
CORNER STEADY SYSTEM	<b>007435</b>	1221694

### DIMENSIONS

A	B	C	D	E	WEIGHT(KG)	F AT 60° ANGLE	GROVE PT. NO.	AL-KO PT NO
505MM	470MM	260MM	190MM	100MM	3.4	470	<b>007432</b>	205808
605MM	510MM	260MM	190MM	100MM	3.6	500	<b>007433</b>	205817
505MM	495MM	280MM	190MM	100MM	4.8	470	<b>007434</b>	267265
605MM	600MM	292MM	190MM	138MM	5.2	520	<b>007435</b>	1221694



**007432**



**007433**



**007434**



**007435**



Corner steady screw  
680 x 20mm **007431**



Corner steady nut  
20mm **007429**  
16mm **007428**

## Miscellaneous



Fixing kit for 2000  
security device  
**007724**

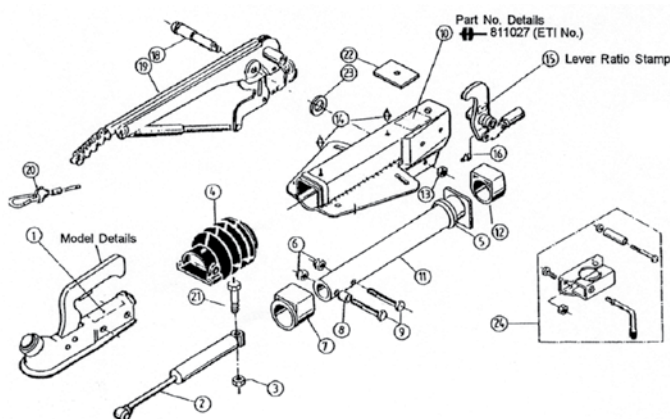


Fixing kit for 1300  
security device  
**007706**



AKS security  
barrel/keys  
**007723**





## 161S Delta Overrun Assembly with Gas Strut Handbrake

REF	DESCRIPTION	GROVE PT NO	AL-KO PT NO
1	COUPLING HEAD (50MM)		QUOTE MODEL DETAILS
2	DAMPER	<b>007600</b>	370556
3	HEXAGON NUT M12 DIN 985 - 10 A3C		702750
4	GAITER	<b>007601</b>	366356
4A	GAITER FOR AK 350	<b>007735</b>	607133
5	BUMP RUBBER		371372
6	HEXAGON NUT M12 DIN 985 - 10 A3C		702750
7	FRONT BEARING BUSH (NOT REAMED)	<b>007606</b>	1210131
8	SPACER		370559
9	HEXAGON BOLT		
	M12 X 70 FOR AK 160		700061
	M12 X 75 FOR AK 300		701959
	M12 X 90 FOR AK 350		702823
10	HOUSING COMPLETE WITH BEARINGS		QUOTE PART NO. & ETI NO.
11	OVERRUN SHAFT		571873
12	REAR BEARING BUSH (NOT REAMED)	<b>007606</b>	1210131
13	HEXAGON NUT M12 DIN 985 - 10 A3C		702750
14	GREASE NIPPLE AM 8 X	<b>007608</b>	1 2171710001
15	OVERRUN LEVER:-		
	LEVER STAMPED 27		380265
	LEVER STAMPED 30		380285
17	BURST RING	<b>007604</b>	366900
16	GREASE NIPPLE AM 6 (INCLUDED IN ITEM 15)		700203
18	HANDBRAKE PIVOT BOLT	<b>007622</b>	581145
19	HANDBRAKE ASSY (INCLUDES ITEM 20)	<b>007623</b>	220096
20	BREAKAWAY CABLE COMPLETE	<b>007130</b>	1387123
21	HEXAGON BOLT M12 X 90 DIN 931		700312
22	REINFORCEMENT PLATE		581699
23	WASHER 19.2 X 34 X 3 DIN 125		370693
24	PRESSED STEEL CLAMP	<b>007619</b>	293020
	CAST CLAMP	<b>007620</b>	285750



Damper **007600**



Gaiter **007601**  
For AK350 **007735**



Front/rear bearing bush **007606**



Grease nipple **007608**



Burst ring **007604**



Handbrake pivot bolt **007622**



Handbrake assembly **007623**



Breakaway cable **007130**



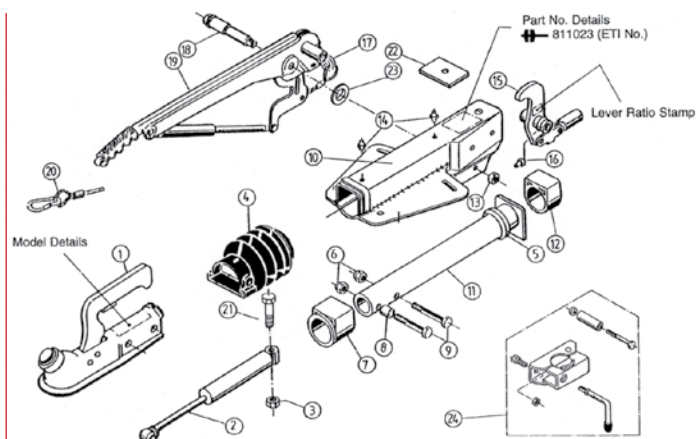
Handbrake grip **007624**



Pressed steel clamp **007619**



Cast clamp **007620**



## 251S Delta Overrun Assembly with Gas Strut Handbrake

REF	DESCRIPTION	GROVE PT NO	AL-KO PT NO
1	COUPLING HEAD (50MM)		QUOTE MODEL DETAILS
2	DAMPER	<b>007625</b>	370589
3	HEXAGON NUT M12 DIN 985 - 10 A3C		702750
4	GAITER	<b>007601</b>	366356
5	BUMP RUBBER		371372
6	HEXAGON NUT M12 DIN 985 - 10 A3C		702750
7	FRONT BEARING BUSH (NOT REAMED)	<b>007606</b>	1210131
8	SPACER		357242
9	HEXAGON BOLT M12 X 75		701249
10	HOUSING COMPLETE WITH BEARINGS		QUOTE PART NO. & ETI NO.
11	OVERRUN SHAFT		571874
12	REAR BEARING BUSH (NOT REAMED)	<b>007606</b>	1210131
13	HEXAGON NUT M12 DIN 985 - 10 A3C		702750
14	GREASE NIPPLE AM 8 X 1	<b>007608</b>	2171710001
15	OVERRUN LEVER WITH LINK AND GREASE NIPPLE (ITEM 16):-		
	LEVER STAMPED 27		380265
	LEVER STAMPED 30		380286
	UNIVERSAL OVERRUN LEVER 90° X		
	X *27		380525
	X *30		380526
	X *33.5		380527
16	GREASE NIPPLE AM 6 (INCLUDED IN ITEM 15)		700203
17	BURST RING	<b>007604</b>	366900
18	HANDBRAKE PIVOT BOLT	<b>007622</b>	581145
19	HANDBRAKE ASSY INCLUDES ITEMS 17 & 20	<b>007628</b>	220098
20	BREAKAWAY CABLE	<b>007130</b>	1387123
21	HEXAGON BOLT M12 X 90 DIN 931		700312
22	REINFORCEMENT PLATE		581699
23	WASHER 19.2 X 34 X 3 DIN 125		370693
24	JOCKEY WHEEL CLAMP KIT COMPLETE :-		
	PRESSED STEEL CLAMP	<b>007619</b>	293020
	CAST CLAMP	<b>007620</b>	285750



Damper **007625**



Gaiter **007601**



Front/rear bearing bush **007606**



Grease nipple **007608**



Burst ring **007604**



Handbrake pivot bolt **007622**



Handbrake assembly **007628**



Breakaway cable **007130**



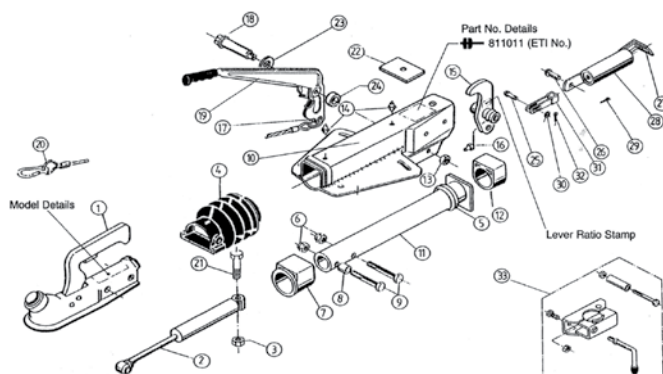
Handbrake grip **007624**



Pressed steel clamp **007619**



Cast clamp **007620**

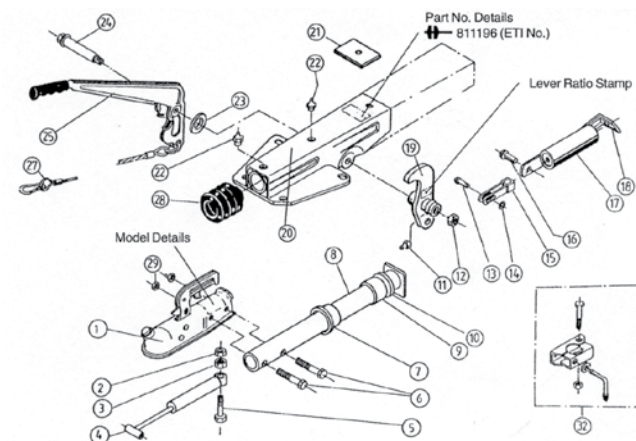


## 161S Delta Overrun Assembly with Spring Cylinder Handbrake

REF	DESCRIPTION	GROVE PT NO	AL-KO PT NO
1	COUPLING HEAD (50MM)		QUOTE MODEL DETAILS
2	DAMPER	007600	370556
3	HEXAGON NUT M12 DIN 985 - 10 A3C		702750
4	GAITER	007601	366356
5	BUMP RUBBER		371372
6	HEXAGON NUT M12 DIN 985 - 10 A3C		702750
7	FRONT BEARING BUSH (NOT REAMED)	007606	1210131
8	SPACER		370559
9	HEXAGON BOLT M12 X 70		7000061
10	HOUSING COMPLETE WITH BEARINGS		QUOTE PART NO. & ETI NO.
11	OVERRUN SHAFT		571873
12	REAR BEARING BUSH (NOT REAMED)	007606	1210131
13	HEXAGON NUT M12 DIN 985 - 10 A3C		702750
14	GREASE NIPPLE AM 8 X 1	007608	2171710001
15	OVERRUN LEVER WITH LINK AND GREASE NIPPLE (ITEM 16)- LEVER STAMPED 27		380310
	LEVER STAMPED 30		380468
16	GREASE NIPPLE AM 6 (INCLUDED IN ITEM 15)		700203
17	BURST RING	007604	366900
18	HANDBRAKE PIVOT BOLT	007609	2077710503
19	HANDBRAKE ASSY (INCLUDES ITEMS 17 & 20)	007610	354259
20	BREAKAWAY CABLE	007130	1387123
21	HEXAGON BOLT M12 X 90 DIN 931		700312
22	REINFORCEMENT PLATE		581699
23	WASHER 17.2 X 30 X 3 DIN 125		700312
24	SPACER		358470
25	CLEVIS PIN 10 X 25 DIN 125		702121
26	CLEVIS PIN		2076810609
27	TENSION BAR		2170110608
28	SPRING CYLINDER	007634	2075020601
29	SPLIT PIN 4 X 20 DIN 94	007616	700192
30	WASHER 10.5 DIN 94		700139
31	FORK END	007633	2073890606
32	SPLIT PIN 3.2 X 20 DIN 94	007616	700191
33	PRESSED STEEL CLAMP	007619	293020
	CAST CLAMP	007620	285750



Damper 007600

Grease nipple  
007608Burst ring  
007604Breakaway  
cable  
007130Handbrake pivot bolt  
007609Grease  
nipple  
007608Burst ring  
007604Breakaway  
cable  
007130Handbrake pivot bolt  
007609Handbrake assembly  
007610Spring cylinder  
007634Fork end  
007633Pressed steel clamp  
007619Split pin  
007616Handbrake grip  
007624Cast clamp  
007620

## 90 S/3 Overrun Assembly Delta & Square Type with Spring Cylinder Handbrake

REF	DESCRIPTION	GROVE PT NO	AL-KO PT NO
1	COUPLING HEAD		QUOTE MODEL
2	HEXAGON NUT M10 DIN 6925 - 8		375724
3	HEXAGON NUT M10 DIN 934		700109
4	DAMPER	007630	359987
5	HEXAGON BOLT		370875
6	HEXAGON BOLT M12 X 55 DIN 931		700281
7	FRONT BEARING BUSH (NOT REAMED)		625601
8	DRAWSHAFT	007627	625626
9	REAR BEARING BUSH (NOT REAMED)		625602
10	BUMP RUBBER	007629	2072410207
11	GREASE NIPPLE AM 6 DIN 71412 INCLUDES ITEM 19		700203
12	HEXAGON NUT M12 DIN 6925-8	007631	700123
13	CLEVIS PIN 10 X 25 DIN 660		702121
14	WASHER 10.5 DIN 125		700139
15	FORK END	007633	2073890606REF
16	CLEVIS PIN 12 X 14 DIN 660		701935
17	SPRING CYLINDER	007634	2075020601
18	TENSION BAR	007635	2076830608
19	OVERRUN LEVER (INCLUDES ITEMS 11, 13 AND 15)		354238
20	HOUSING COMPLETE WITH BEARINGS		QUOTE PART NO. & ETI NO.
21	REINFORCEMENT PLATE		625627
22	GREASE NIPPLE AM 8 X 1	007608	2171710001
23	WASHER DIN 433		702819
24	HANDBRAKE PIVOT BOLT		625642
25	HANDBRAKE ASSY (INCLUDES ITEMS 16, 18, 27, & BURST RING)	007637	354001
27	BREAKAWAY CABLE	007130	1387123
28	GAITER	007638	2073890210
29	HEXAGON NUT M12 DIN 980		704065
32	PRESSED STEEL CLAMP	007639	205318
	CAST CLAMP	007640	295191



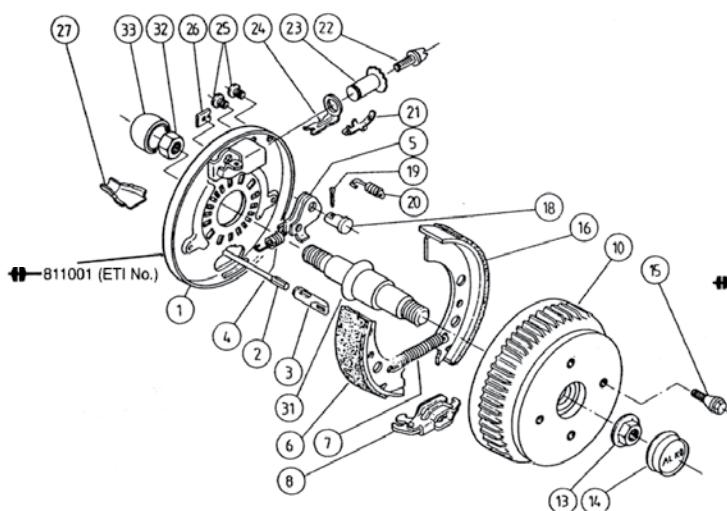
Damper 007630



Draw shaft 007627

Bump rubber  
007629Hex nut M12  
007631Fork end  
007633Spring cylinder  
007634Tension bar  
007635Grease  
nipple  
007608Breakaway  
cable  
00713090S/3 delta  
assembly  
007638Handbrake assembly  
007637Pressed steel  
Clamp 007639  
Handle only 007642Cast clamp  
007640Handbrake grip  
007624

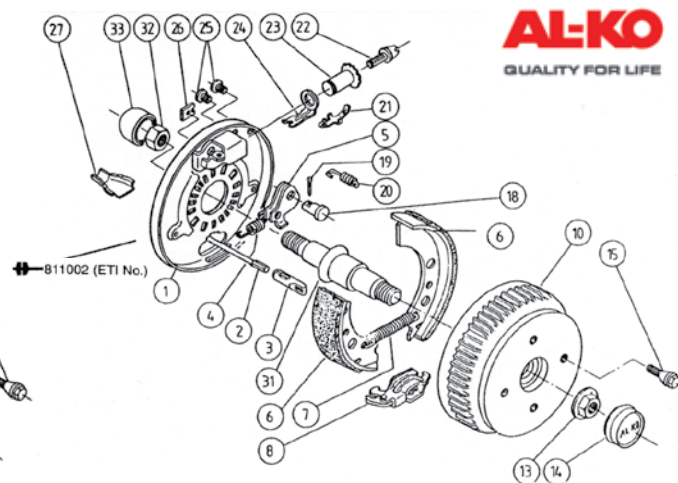




## Wheelbrake 1637 Euro-Axle Version 1994 onwards

REF	DESCRIPTION	GROVE PT NO	AL-KO PT NO
1	BACKPLATE WELDED LH		*571950
	BACKPLATE WELDED RH *571951		
2	DETACHABLE BOWDEN CABLE OUTER CABLE LENGTH:		
	350 MM	299707	
	530 MM	299708	
	770 MM	299709	
	890 MM	<b>007645</b>	247284
	1020 MM	<b>007646</b>	247285
	1130 MM	<b>007647</b>	247286
	1320 MM	<b>007648</b>	247287
	1430 MM	299714	
	1620 MM	299715	
	1790 MM	299716	
3	CABLE EYE CAST VERSION	371388	
	PRESSED VERSION	<b>007651</b>	604262
4	REVERSE LEVER SPRING LH	<b>007652</b>	21878870001
	REVERSE LEVER SPRING RH	<b>007653</b>	327805
5	REVERSE LEVER LH	<b>007654</b>	384308
	REVERSE LEVER RH	<b>007655</b>	384309
6	BRAKE SHOE TRAILING	<b>007660</b>	ECS-BRCMP01
7	PULL-OFF SPRING	<b>007657</b>	2182150003
8	EXPANDING CLUTCH	<b>007658</b>	570666
10	BRAKE DRUM & BEARING UP TO 650 KG:		
	98 X 4/M12 X 1.5	573188	
	100 X 4/M12 X 1.5	<b>007659</b>	573189
	101.6 X 4/M10 X 1.5	578822	
	112 X 5/M12 X 1.5	573190	
13	FLANGE NUT (20MM)	<b>007662</b>	581200
14	DUST CAP	<b>007663</b>	581197
15	WHEELBOLT: CONICAL M12 X 1.5	<b>007664</b>	2081670018
	SPHERICAL M12 X 1.5		2081670020
16	BRAKE SHOE - LEADING		384296
18	BEARING BOLT	<b>007667</b>	368651
19	SPLIT PIN 4 X 20 - DIN 94	<b>007616</b>	700192
20	SHOE RETAINING SPRING	<b>007669</b>	2088800003
21	ADJUSTER ASSEMBLY COMPLETE	<b>007670</b>	387706
22	AS ABOVE		
23	AS ABOVE		
24	AS ABOVE		
25	PLASTIC PLUG 10X13X1	<b>007671</b>	373245
26	COVER PLATE	<b>007672</b>	2382610002
27	BOWDEN CABLE SHELL	<b>007673</b>	371387
31	STUB AXLE		*581563
32	LOCKING NUT		*702881
33	COVER	<b>007676</b>	604472

\* NOT AVAILABLE AS SPARE ITEM. PLEASE CONSULT AL-KO SERVICE.



## Wheelbrake 2051 Euro-Axle Version 1994 onwards

REF	DESCRIPTION	GROVE PT NO	AL-KO PT NO
1	BACKPLATE WELDED LH UP TO 650 KG		*571376
	BACKPLATE WELDED RH UP TO 750 KG		*586406
	BACKPLATE WELDED RH UP TO 650 KG		*571377
	BACKPLATE WELDED LH UP TO 750 KG		*586407
2	DETACHABLE BOWDEN CABLE OUTER CABLE LENGTH:		
	350 MM	299707	
	530 MM	299708	
	770 MM	299709	
	890 MM	<b>007645</b>	247284
	1020 MM	<b>007646</b>	247285
	1130 MM	<b>007647</b>	247286
	1320 MM	<b>007648</b>	247287
	1430 MM	299714	
	1620 MM	299715	
	1790 MM	299716	
3	CABLE EYE CAST VERSION	371388	
	CABLE EYE PRESSED VERSION	<b>007651</b>	604262
4	REVERSE LEVER SPRING	<b>007677</b>	2187370003
5	REVERSE LEVER LH	<b>007678</b>	571386
	REVERSE LEVER RH	<b>007679</b>	571387
6	BRAKE SHOE	<b>007683</b>	384294
7	PULL-OFF SPRING	<b>007681</b>	2182000007
8	EXPANDING CLUTCH	<b>007682</b>	571510
10	BRAKE DRUM & BEARING UP TO 650 KG:		
	98 X 4/M12 X 1.5	573191	
	100 X 4/M12 X 1.5	<b>007684</b>	573192
	101.6 X 4/M12 X 1.5		610949
	112 X 5/M12 X 1.5		573193
	BRAKE DRUM & BEARING UP TO 750 KG:		
	139.7 X 4/M12 X 1.5		578826
	140 X 5/M14 X 1.5		578825
	112 X 5/M12 X 1.5		586450
13	FLANGE NUT (20MM)	<b>007662</b>	581200
14	DUST CAP	<b>007663</b>	581197
15	WHEELBOLT CONICAL M12 X 1.5	<b>007664</b>	2081670018
	WHEELBOLT SPHERICAL M12 X 1.5		2081670020
	WHEELBOLT SPHERICAL M14 X 1.5		2081670002
18	BEARING BOLT	<b>007667</b>	368651
19	SPLIT PIN 4 X 20 - DIN 94	<b>007616</b>	00192
20	SHOE RETAINING SPRING	<b>007669</b>	2088800003
21	ADJUSTER ASSEMBLY COMPLETE	<b>007670</b>	387706
22	AS ABOVE		
23	AS ABOVE		
24	AS ABOVE		
25	PLASTIC PLUG 10X13X1	<b>007671</b>	373245
26	COVER PLATE	<b>007672</b>	2382610002
27	BOWDEN CABLE SHELL	<b>007673</b>	371387
31	STUB AXLE		*583563
	STABILFORM 900 KG - 1300 KG		*581043
	FORGED S/A 900 KG - 1500 KG		*583664
32	LOCKING NUT		*702881
33	COVER	<b>007676</b>	604472

\* NOT AVAILABLE AS SPARE ITEM. PLEASE CONSULT AL-KO SERVICE.



Brakedrum & bearings  
Upto 650Kg  
1637 **007659**  
Upto 650Kg  
2051 **007684**



Flange "ONE SHOT" nuts  
25mm 2361  
**007689**  
20mm 1637/2051  
**007662**



Bowden cable  
890mm **007645**  
1020mm **007646**  
1130mm **007647**  
1320mm **007648**



Wheelbolt  
conical  
M12 x 1.5  
**007664**



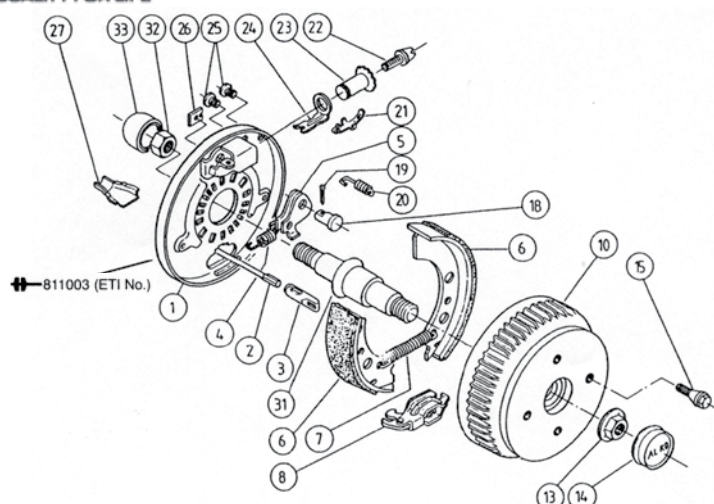
Cover  
2361  
**007693**



Dust caps  
1637/2051  
**007663**  
2361  
**007690**



Cover  
1637/2051  
**007676**

**AL-KO**  
 QUALITY FOR LIFE


## Wheelbrake 2361 Euro-Axle Version 1994 onwards

REF	DESCRIPTION	GROVE PT NO	AL-KO PT NO
1	BACKPLATE WELDED LH UP TO 650 KG		*572372
	BACKPLATE WELDED RH UP TO 750 KG		*572373
2	DETACHABLE BOWDEN CABLE OUTER CABLE LENGTH:		
	350 MM		299707
	530 MM		299708
	770 MM		299709
	890 MM	007645	247284
	1020 MM	007646	247285
	1130 MM	007647	247286
	1320 MM	007648	247287
	1430 MM		299714
	1620 MM		299715
	1790 MM		299716
3	CABLE EYE CAST VERSION		371388
	CABLE EYE PRESSED VERSION	007651	604262
4	REVERSE LEVER SPRING	007677	2187370003
5	REVERSE LEVER LH	007678	571386
	REVERSE LEVER RH	007679	571387
6	BRAKE SHOE	007687	ECS-BROMPO6
7	PULL-OFF SPRING	007681	2082000007
8	EXPANDING CLUTCH	007682	571510
10	BRAKE DRUM & BEARING:		
	112 X 5/M12 X 1.5		573194
	139.7 X 4/M12 X 1.5		610529
	140 X 5/M12 X 1.5		578834
	165.1 X 5/M16 STUDS		578835
13	FLANGE NUT (25MM)	007689	582506
14	DUST CAP	007690	582505
15	WHEELBOLT:		
	60° CONICAL M12 X 1.5	007664	2081670018
	R12 SPHERICAL M12 X 1.5		2081670020
	R14 SPHERICAL M14 X 1.5		2081670002
	WHEELNUT:		
	SPHERICAL M16 X 2		F14631002
	80° CONICAL M16 X 2		602439
18	BEARING BOLT	007667	368651
19	SPLIT PIN 4 X 20 - DIN 94	007616	700192
20	SHOE RETAINING SPRING	007669	2088800003
21	ADJUSTER ASSEMBLY COMPLETE	007670	387706
22	AS ABOVE		
23	AS ABOVE		
24	AS ABOVE		
25	PLASTIC PLUG 10X13X11	007671	373245
26	COVER PLATE	007672	2382610002
27	BOWDEN CABLE SHELL	007673	371387
31	STUB AXLE		*582541
32	LOCKING NUT		*703112
33	COVER	007693	582542

\* NOT AVAILABLE AS SPARE ITEM. PLEASE CONSULT AL-KO SERVICE.

A	007670	WHEELBRAKE ADJUSTER ASSEMBLY
B	007673	BOWDEN CABLE SHELL
C	007660	BRAKE KIT 1637 EURO 94 ONWARDS
	007683	BRAKE KIT 2051 EURO 94 ONWARDS
	007687	BRAKE KIT 2361 EURO 94 ONWARDS
D	007654	REVERSE LEVER L/H 1637
	007655	REVERSE LEVER R/H 1637
	007678	REVERSE LEVER L/H 2051/2361
	007679	REVERSE LEVER R/H 2051/2361
E	007651	CABLE EYE PRESSED
F	007658	EXPANDING CLUTCH 1637
	007682	EXPANDING CLUTCH 2051/2361
G	007657	PULL OFF SPRING 1637
H	007681	PULL OFF SPRING 2051/2361
I	007616	SPLIT PIN
J	007672	COVER PLATE
K	007669	SHOE RETAINING SPRING
L	007652	REVERSE LEVER SPRING L/H 1637
	007653	REVERSE LEVER SPRING R/H 1637
M	007677	REVERSE LEVER SPRING 2051/2361
N	007671	PLASTIC PLUG
O	007667	BEARING BOLT

